



FORGE

**Transgender
Sexual
Violence
Project**

**Sexual Violence
Healing Modalities:**

A 6-part workshop series

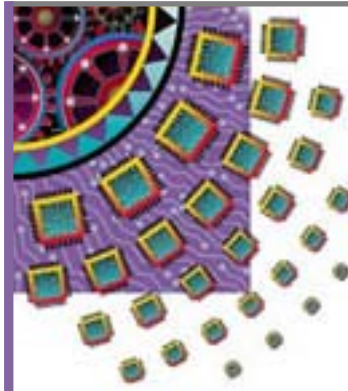
This practical and hope-filled workshop series will begin in the Summer of 2006. All events are free & open to the public, but targeted towards the LGBT (Lesbian, Gay, Bisexual and Transgender) Community (with special emphasis on Transgender survivors). All workshops will be held at the Milwaukee LGBT Community Center.

- ▶ **Trans 101: What Providers Do (and Don't) Need to Know & Transgender Sexual Violence: Unique Concerns and Issues**
- ▶ **Dialectical Behavioral Therapy: A Cognitive Behavioral Approach to Trauma**
- ▶ **EMDR (Eye Movement Desensitization and Reprocessing)**
- ▶ **Experiential and Group Dynamic Experiences & Writing to Heal Your Life**
- ▶ **Imagery Rescripting and Reprocessing Therapy**
- ▶ **Multiple Bodywork Approaches: Minimizing Traumatic Re-experiencing**

Details will be available in May 2006. Please contact FORGE to be placed on the direct mailing list or look for announcements in Queer Life News and other Wisconsin newspapers.

For more information, contact FORGE TSVP at ...

PO Box 1272, Milwaukee, WI 53201 — 414-559-2123 — sv@forge-forward.org — www.forge-forward.org



FORGE

**Transgender
Sexual
Violence
Project**

**Sexual Violence
Healing Modalities:**

A 6-part workshop series

This practical and hope-filled workshop series will begin in the Summer of 2006. All events are free & open to the public, but targeted towards the LGBT (Lesbian, Gay, Bisexual and Transgender) Community (with special emphasis on Transgender survivors). All workshops will be held at the Milwaukee LGBT Community Center.

- ▶ **Trans 101: What Providers Do (and Don't) Need to Know & Transgender Sexual Violence: Unique Concerns and Issues**
- ▶ **Dialectical Behavioral Therapy: A Cognitive Behavioral Approach to Trauma**
- ▶ **EMDR (Eye Movement Desensitization and Reprocessing)**
- ▶ **Experiential and Group Dynamic Experiences & Writing to Heal Your Life**
- ▶ **Imagery Rescripting and Reprocessing Therapy**
- ▶ **Multiple Bodywork Approaches: Minimizing Traumatic Re-experiencing**

Details will be available in May 2006. Please contact FORGE to be placed on the direct mailing list or look for announcements in Queer Life News and other Wisconsin newspapers.

For more information, contact FORGE TSVP at ...

PO Box 1272, Milwaukee, WI 53201 — 414-559-2123 — sv@forge-forward.org — www.forge-forward.org